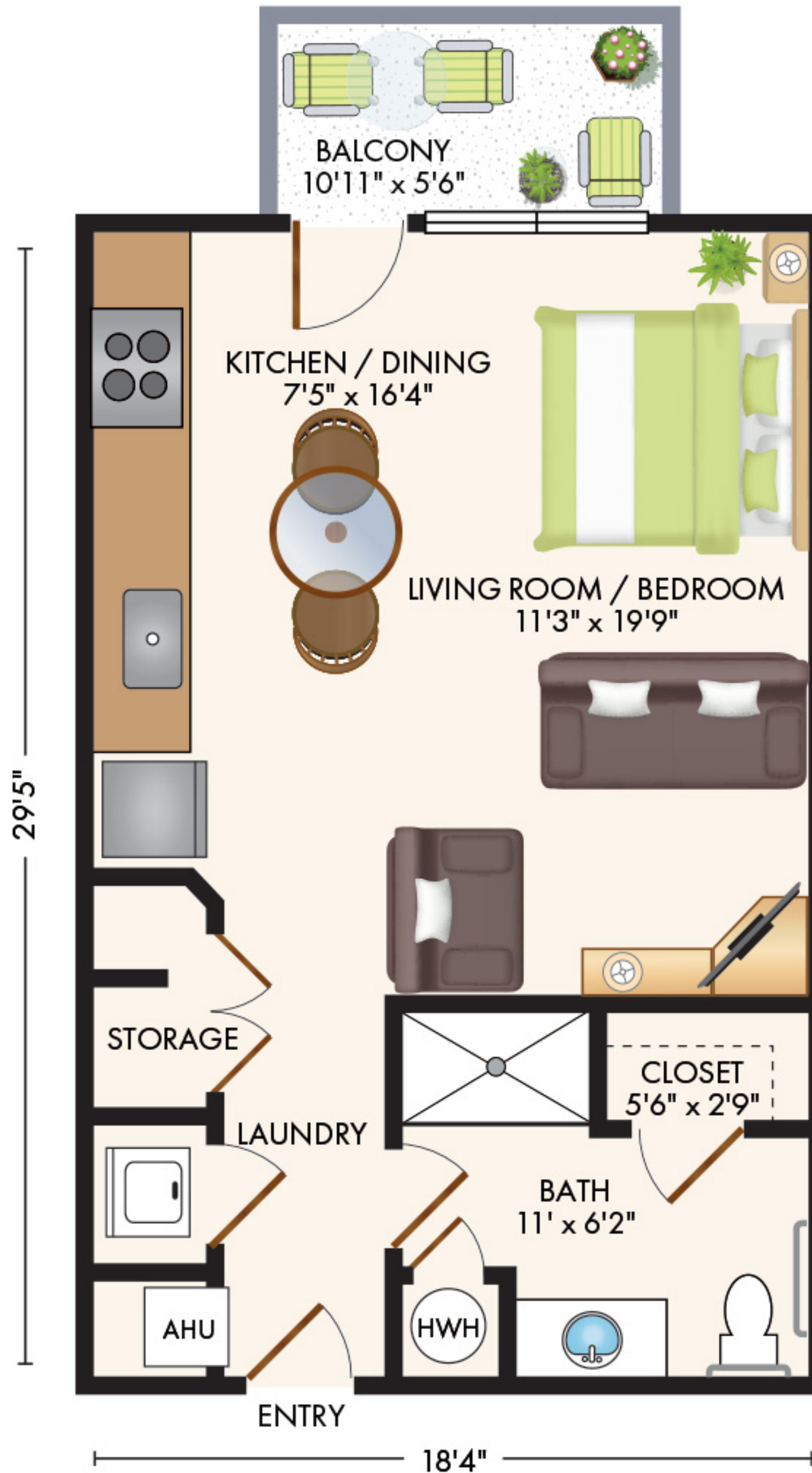


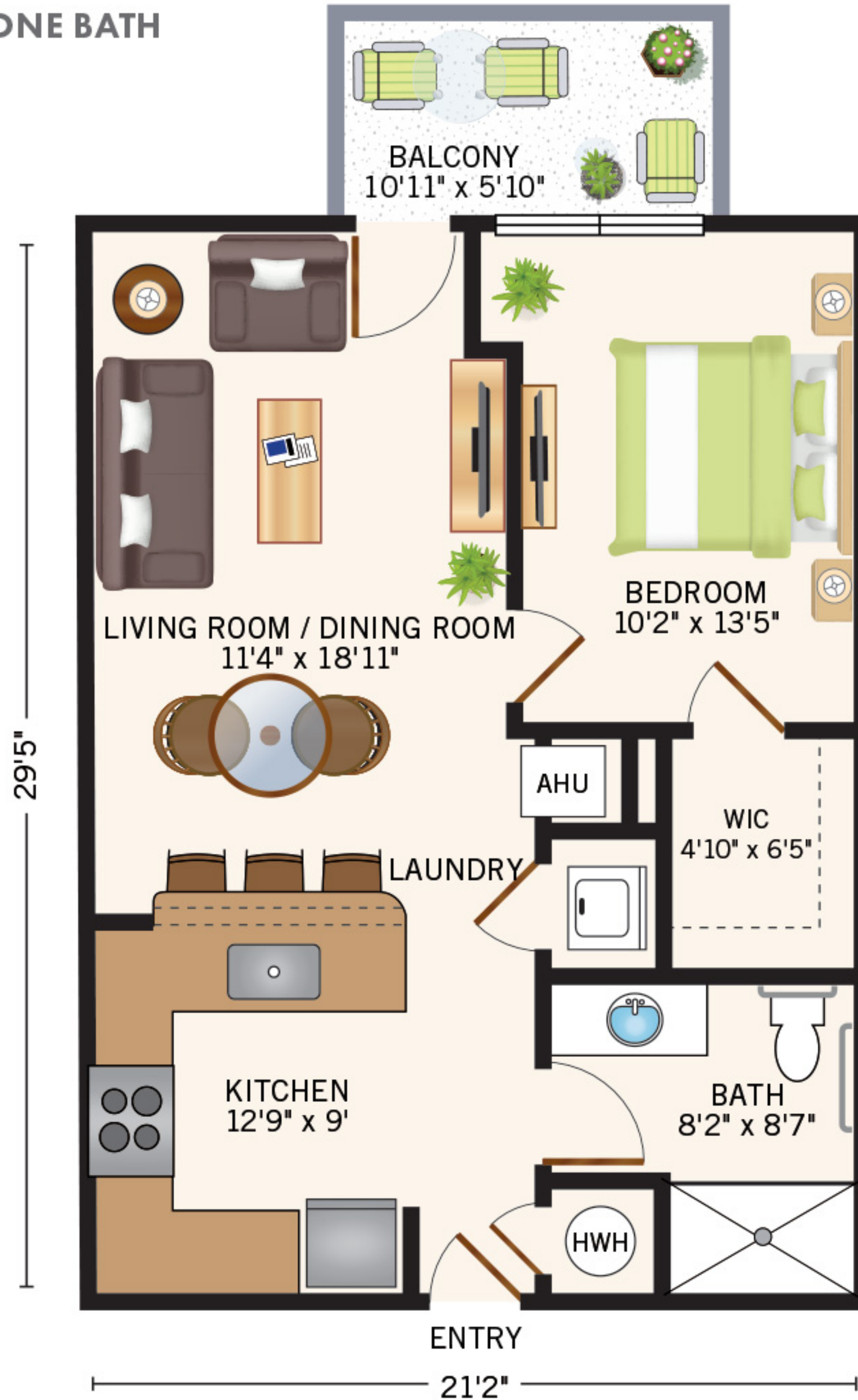
**RED TAIL  
 STUDIO WITH BATH**  
 543 Square Feet



Floor plans are not to scale and are shown for comparative purposes only.  
 Actual apartment floor plans may have minor variations.

The Sky Bridge Leasing Gallery: 450 Sky Bridge Drive, Suite 107 • Upper Marlboro, MD 20774  
 The ARCH Community: 400-450 Sky Bridge Drive • Upper Marlboro, MD 20774  
 The PARC Community: 360 Sky Bridge Drive • Upper Marlboro, MD 20774

**SWAINSON**  
**ONE BEDROOM ONE BATH**  
 618 Square Feet



Floor plans are not to scale and are shown for comparative purposes only.  
 Actual apartment floor plans may have minor variations.

The Sky Bridge Leasing Gallery: 450 Sky Bridge Drive, Suite 107 • Upper Marlboro, MD 20774  
 The ARCH Community: 400-450 Sky Bridge Drive • Upper Marlboro, MD 20774  
 The PARC Community: 360 Sky Bridge Drive • Upper Marlboro, MD 20774

**COOPERS**  
**ONE BEDROOM ONE BATH**  
 638 Square Feet



Floor plans are not to scale and are shown for comparative purposes only.  
 Actual apartment floor plans may have minor variations.

The Sky Bridge Leasing Gallery: 450 Sky Bridge Drive, Suite 107 • Upper Marlboro, MD 20774  
 The ARCH Community: 400-450 Sky Bridge Drive • Upper Marlboro, MD 20774  
 The PARC Community: 360 Sky Bridge Drive • Upper Marlboro, MD 20774

**HARRIS**  
**ONE BEDROOM ONE BATH**  
 734 Square Feet



Floor plans are not to scale and are shown for comparative purposes only.  
 Actual apartment floor plans may have minor variations.

The Sky Bridge Leasing Gallery: 450 Sky Bridge Drive, Suite 107 • Upper Marlboro, MD 20774  
 The ARCH Community: 400-450 Sky Bridge Drive • Upper Marlboro, MD 20774  
 The PARC Community: 360 Sky Bridge Drive • Upper Marlboro, MD 20774

**GOSHAWK**  
**ONE BEDROOM ONE BATH**

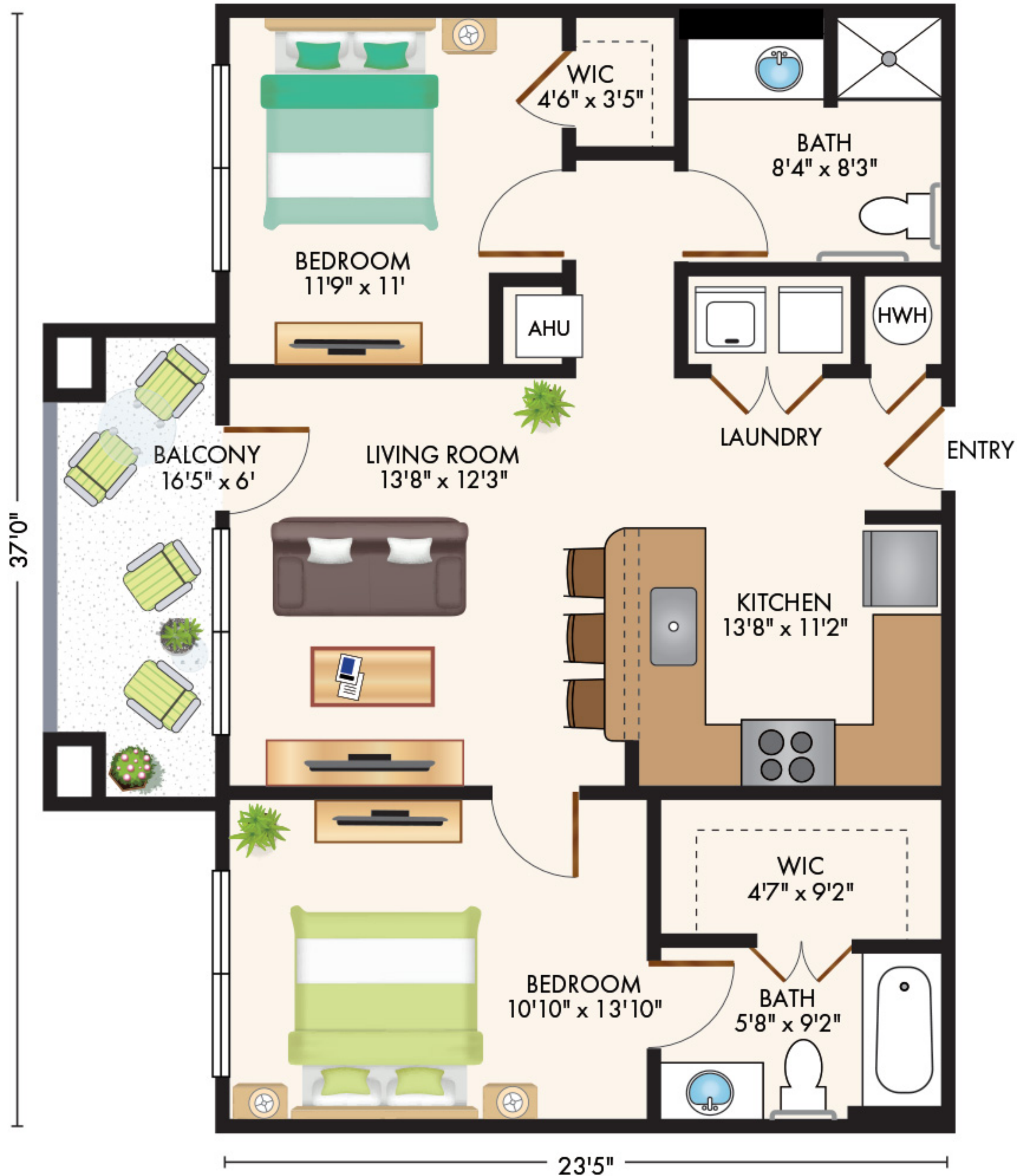
886 Square Feet



Floor plans are not to scale and are shown for comparative purposes only.  
 Actual apartment floor plans may have minor variations.

The Sky Bridge Leasing Gallery: 450 Sky Bridge Drive, Suite 107 • Upper Marlboro, MD 20774  
 The ARCH Community: 400-450 Sky Bridge Drive • Upper Marlboro, MD 20774  
 The PARC Community: 360 Sky Bridge Drive • Upper Marlboro, MD 20774

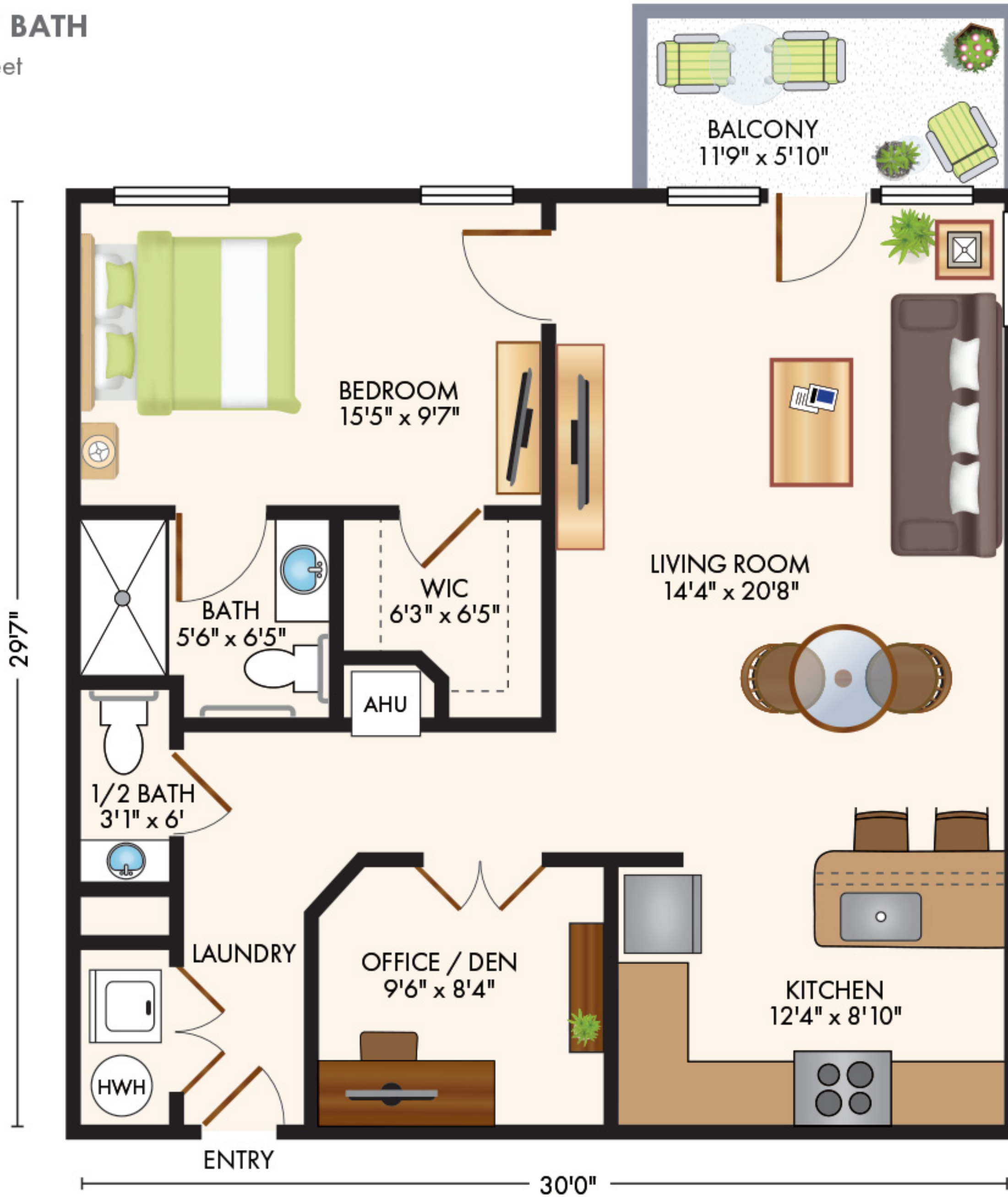
**KESTREL**  
**TWO BEDROOM TWO BATH**  
 860 Square Feet



Floor plans are not to scale and are shown for comparative purposes only.  
 Actual apartment floor plans may have minor variations.

The Sky Bridge Leasing Gallery: 450 Sky Bridge Drive, Suite 107 • Upper Marlboro, MD 20774  
 The ARCH Community: 400-450 Sky Bridge Drive • Upper Marlboro, MD 20774  
 The PARC Community: 360 Sky Bridge Drive • Upper Marlboro, MD 20774

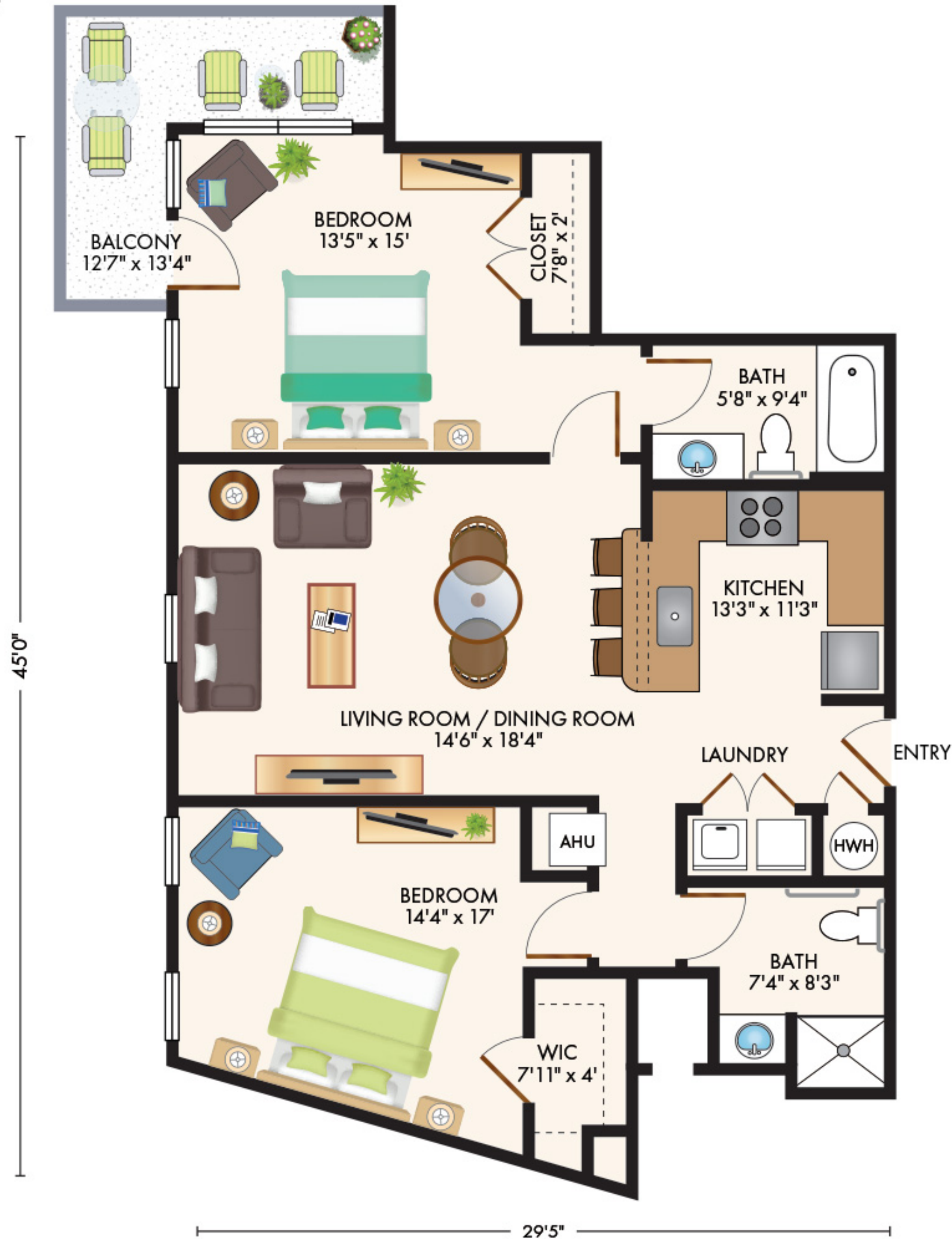
**OSPREY**  
**ONE BEDROOM ONE BATH**  
**WITH HALF BATH**  
 880 Square Feet



Floor plans are not to scale and are shown for comparative purposes only.  
 Actual apartment floor plans may have minor variations.

The Sky Bridge Leasing Gallery: 450 Sky Bridge Drive, Suite 107 • Upper Marlboro, MD 20774  
 The ARCH Community: 400-450 Sky Bridge Drive • Upper Marlboro, MD 20774  
 The PARC Community: 360 Sky Bridge Drive • Upper Marlboro, MD 20774

**MERLIN-A**  
**TWO BEDROOM TWO BATH**  
 1,071 Square Feet

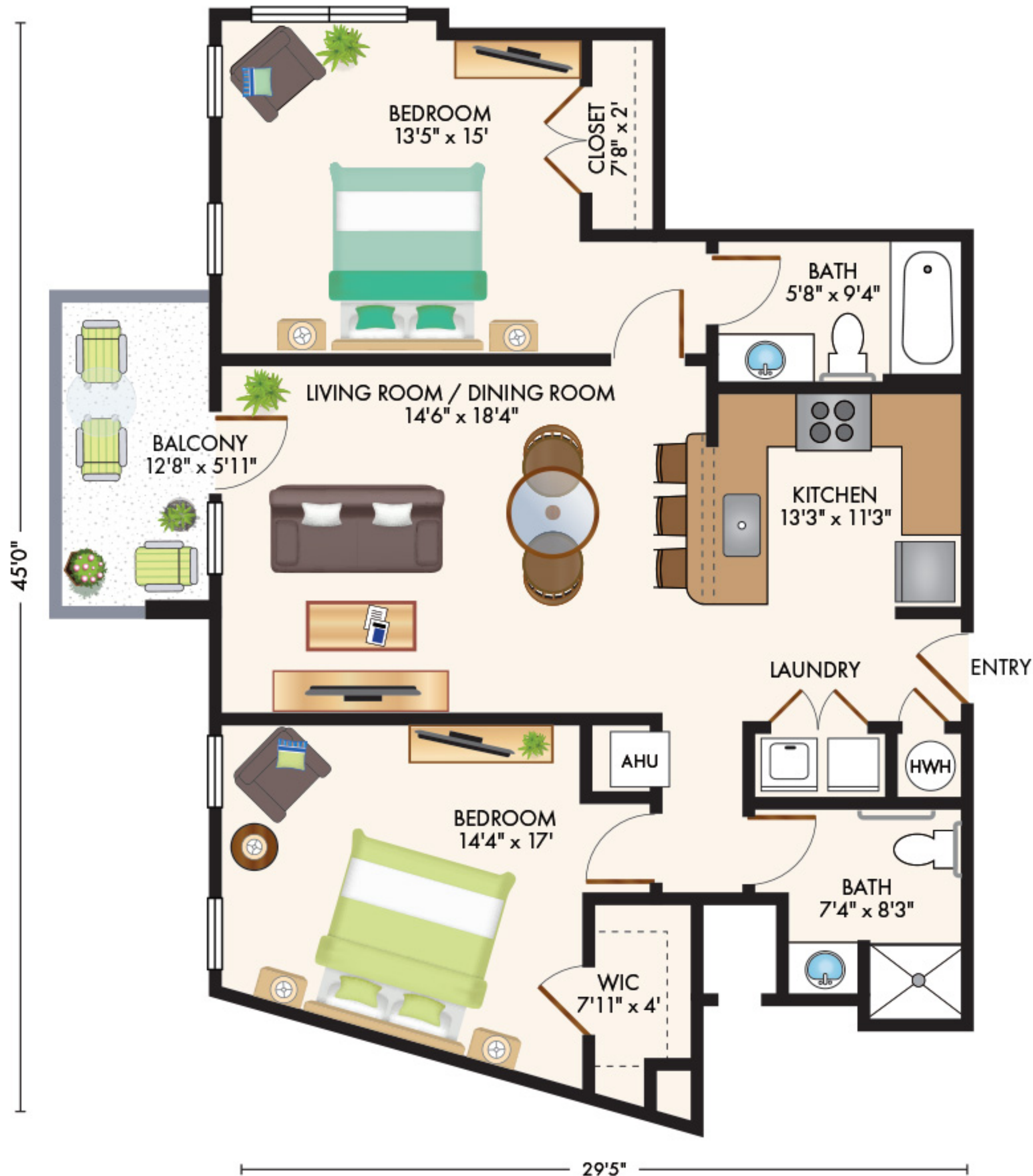


Floor plans are not to scale and are shown for comparative purposes only.  
 Actual apartment floor plans may have minor variations.

The Sky Bridge Leasing Gallery: 450 Sky Bridge Drive, Suite 107 • Upper Marlboro, MD 20774  
 The ARCH Community: 400-450 Sky Bridge Drive • Upper Marlboro, MD 20774  
 The PARC Community: 360 Sky Bridge Drive • Upper Marlboro, MD 20774



**MERLIN-B**  
**TWO BEDROOM TWO BATH**  
 1,071 Square Feet



Floor plans are not to scale and are shown for comparative purposes only.  
 Actual apartment floor plans may have minor variations.

The Sky Bridge Leasing Gallery: 450 Sky Bridge Drive, Suite 107 • Upper Marlboro, MD 20774  
 The ARCH Community: 400-450 Sky Bridge Drive • Upper Marlboro, MD 20774  
 The PARC Community: 360 Sky Bridge Drive • Upper Marlboro, MD 20774

